



From humble settlement to vibrant city

NOW IN its 85th year of operations, Mount Isa Mines and the city of Mount Isa are in the middle of year-long celebrations.

The present city of Mount Isa had its origins in a small frontier settlement that sprang up after the discovery of silver-lead ore in 1923.

Mount Isa Mines was established a year later.

Mount Isa is now a thriving industrial commercial centre built around the mine, now owned by Xstrata.

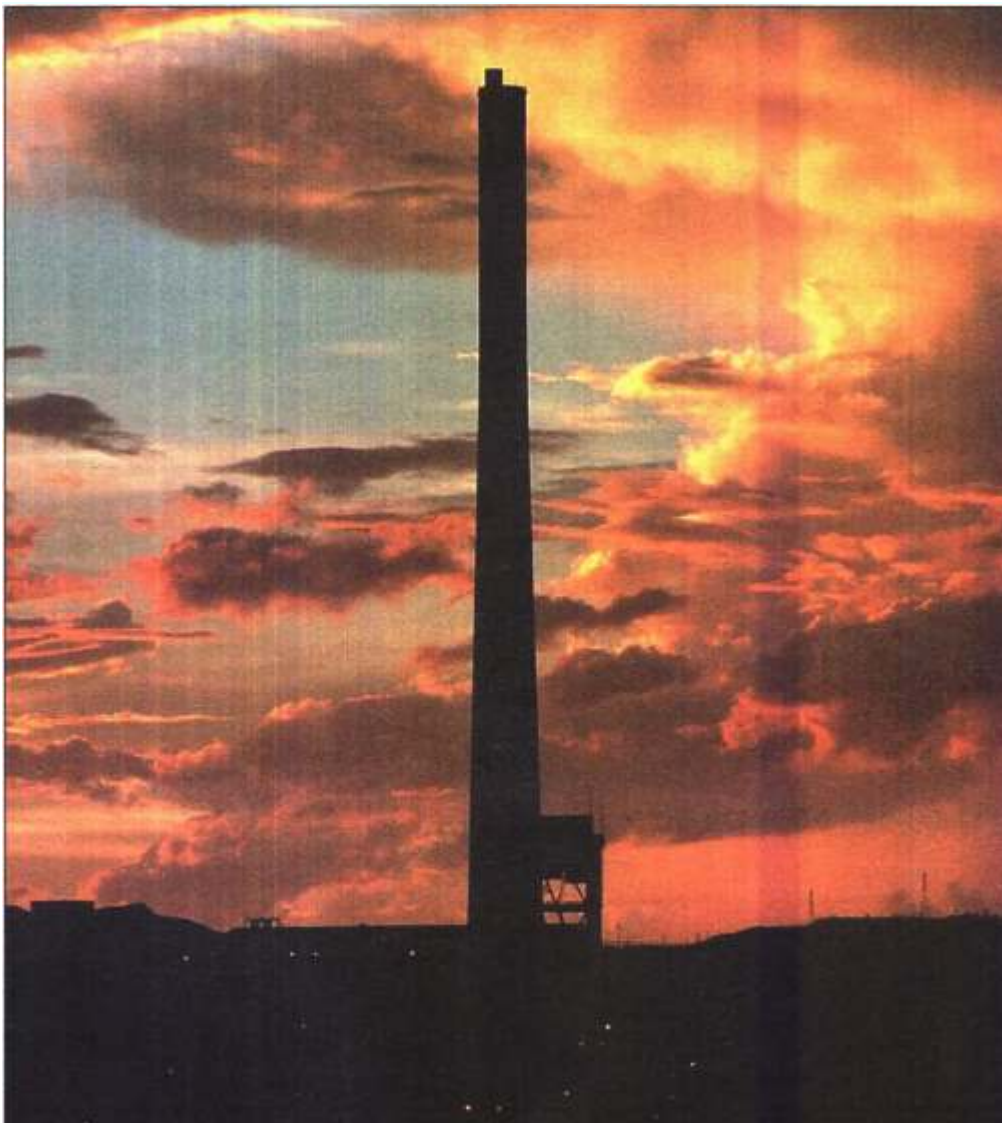
Xstrata Copper North Queensland chief

operating officer Steve de Kruijff said the establishment of Mount Isa Mines Ltd in 1924 harnessed the region's mining potential.

"Over the last 85 years, Mount Isa Mines has played an important role in the economic growth of Queensland," Mr de Kruijff said.

"From spearheading the revitalisation of the State's railways to becoming Australia's largest single creator of export income in the 1950s, this mine and this community share a rich history we should be very proud of."

See feature page 54



Stack from the lookout at dusk